

Course Information

Course Directors:

Dominique Bettex, Zurich
Pierre-Guy Chassot, Lausanne
Manfred Seeberger, Basel
Chris Sulzer, Lausanne

Faculty:

Faculty members are specialists in echocardiography from the fields of cardiology, anaesthesiology and cardiac surgery.

Balthasar Eberle, Berne
Jens Fassl, Basel
Miodrag Filipovic, St. Gallen
Xavier Jeanrenaud, Lausanne
Giorgio Loderer, Berne
Isabelle Michaux, Yvoir, Belgium
Xavier Mueller, Lucerne
Patricia Rhomberg, Zurich
Karl Skarvan, Basel
Hendrik Tevaearai, Berne
Claudia Zobrist, Berne
Michel Zuber, Lucerne

Basic Course Description:

This course is designed to provide the basic knowledge on perioperative TEE to participants with no or very limited previous TEE knowledge. The course combines lectures on all basic aspects of perioperative TEE with frequent interactive case presentations. The course also gives the opportunity to practice a TEE examination on a TEE simulator. In addition, the surgical cardiac anatomy wet laboratory on Thursday will give an ideal chance to refresh one's knowledge on cardiac anatomy; a pig's heart will be available for each two participants.

Continuing Medical Education Credits:

The Swiss Society of Anaesthesiology and Reanimation designates this course for 18,5 hours of Category I continuing medical education credit, the Swiss Society of Intensive Care Medicine and the Swiss Society of Thoracic and Cardiovascular Surgery 20 hours.

Course Language:

English (no simultaneous translation will be available)

Tuition fee:

Early registration: CHF 850.- (paid before September 30, 2010)
After September 30, 2010: CHF 950.-

General Information

Information & Registration:

Sylvia Christeller, Departement Anästhesie und Intensivbehandlung, Universitätsspital Basel, CH-4031 Basel
christellers@uhbs.ch

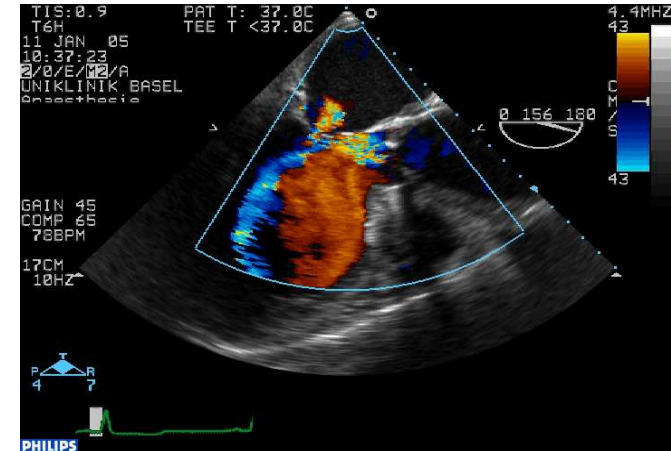
Number of Participants:

The number of participants is limited. Registration will be performed based on the order of receipt of the tuition fee.

Hotel Meeting Rate:

Rooms have been reserved in the Solbad Hotel at a meeting rate of CHF 145.-- per person and night. This price includes single room, all meals and free entrance to the "Wellness Oasis" with swimming pool and sauna etc. (CHF 125.-- per person in double room). Hotel homepage: <http://www.solbadhotel-sigriswil.ch>

Basic Course in Transesophageal Echocardiography



November 25 – 27, 2010

Solbad Hotel Sigriswil

Organized by the

Task Force for Transesophageal
Echocardiography of the Swiss Society of
Anesthesiology and Reanimation

Thursday, November 25, 2010

Morning Session

09:00 – 09:30	Arrival of the participants, coffee & orange juice
09:30	Welcome and introduction to the course <i>Dominique Bettex, Pierre-Guy Chassot, Manfred Seeberger</i>
09:35	Basic anatomy for echocardiographers – Correlation between topographical anatomy and TEE views <i>Patricia Rhomberg</i>
10:15	Safety considerations, contraindications, complications of TEE <i>Balthasar Eberle</i>
10:45	Break
11:15 – 12:25	Principles of ultrasound and instrumentation – Applications to TEE Lecture and interactive discussion of common pitfalls <i>Chris Sulzer, Pierre-Guy Chassot</i>

12:30 Lunch, Hotel registration

Afternoon Session

14:00	Comprehensive intraoperative multiplane TEE examination according to ASE/SCA guidelines – Revised basic intraoperative TEE examination, a practical approach with repeated examinations Lecture and interactive, practical exercises <i>Chris Sulzer</i>
15:00	Test: Standard TEE views <i>Manfred Seeberger</i>
15:30	Break
16:00	Surgical cardiac anatomy wet laboratory A pig's heart is available for each two participants <i>Hendrik Tevaearai, Xavier Mueller</i>
18:00 – 20:00	Relax and enjoy the "Wellness Oasis" with swimming pool, sauna etc
20:00	Dinner

Friday, November 26, 2010

08:00	Mitral valve: normal function <i>Dominique Bettex</i>
08:45	Regional ventricular function – the 17 segment model, monitoring for ischemia Lecture and interactive case discussion <i>Manfred Seeberger</i>
09:45	Break
10:10 – 11.10	Global ventricular function, volemia, implications of hemodynamics Lecture and interactive case discussion <i>Karl Skarvan</i>
11:15 – 17:15	Working in groups (lunch break 12:45–14:00 incl.) TEE simulator: practical training <i>Michel Zuber, Giorgio Loderer, Karl Skarvan</i> Examination of the thoracic aorta. Lecture and interactive discussion of standard TEE views. <i>Claudia Zobrist</i> Valvular function and dysfunction (Part I): Aortic regurgitation, aortic stenosis <i>Xavier Jeanrenaud 60'</i> Valvular function and dysfunction (Part II): Mitral regurgitation, mitral stenosis <i>Dominique Bettex 60'</i> Standard TEE views: walls and coronary perfusion (interactive session) <i>Isabelle Michaux</i> Standard TEE views: valves and valvular function (interactive session) <i>Karl Skarvan</i> Standard TEE views: topographical anatomy (interactive session) <i>Jens Fassel</i>
18:00 – 20:00	Relax and enjoy the "Wellness Oasis" with swimming pool, sauna etc
20:00	Dinner

Saturday, November 27, 2010

08:00	Test: standard TEE views <i>Manfred Seeberger</i>
08:30	Intraoperative evaluation of prosthetic valves <i>Dominique Bettex</i>
09:15	Interactive case discussion <i>Jens Fassel, Miodrag Filipovic, Manfred Seeberger</i>
10:15	Break – Hotel check out
10:45	Diastolic function <i>Miodrag Filipovic</i>
11:45	Right ventricular function <i>Isabelle Michaux</i>
12:50	Course evaluation, feedback for organizers and faculty <i>Dominique Bettex, Pierre-Guy Chassot, Manfred Seeberger</i>
13:00	Adjourn

Generously supported by

